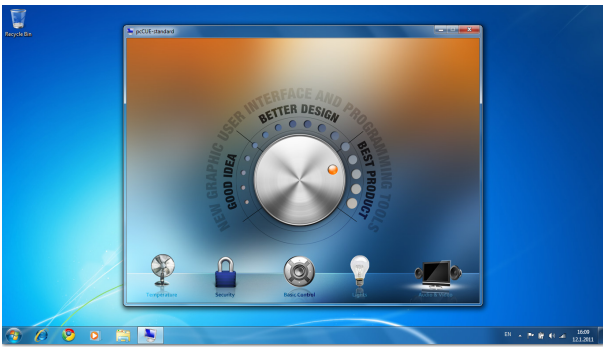


# pcCUE-standard

PC as a Cue System Control Panel

**cue**



## Main Features

- Runtime for Cue Visual Composer applications
- Microsoft® Windows compatible
- Resolution set by application
- Zoomable application window
- Full screen mode available
- Application upload directly from Cue Visual Composer or using configuration window
- Ethernet or Wi-Fi communication
- Software registration required

## Description

This software enables to use any Windows PC or Tablet as a Cue System control panel. For some projects the pcCUE-standard can serve as main control panel or it can be suitable addition to CUE control panels. Application runs in standard zoomable window or it can be run in full screen mode.

GUI application has to be designed using standard programming tool - Cue Visual Composer, where effective application preparing is achieved by visual programming approach with drag and drop, advanced editing technique IntelliSense, export and import of ready to use pieces of program and more.

Communication between the control panel device and control system is based on Ethernet or Wi-Fi communication using CUEnet<sup>2</sup> protocol.

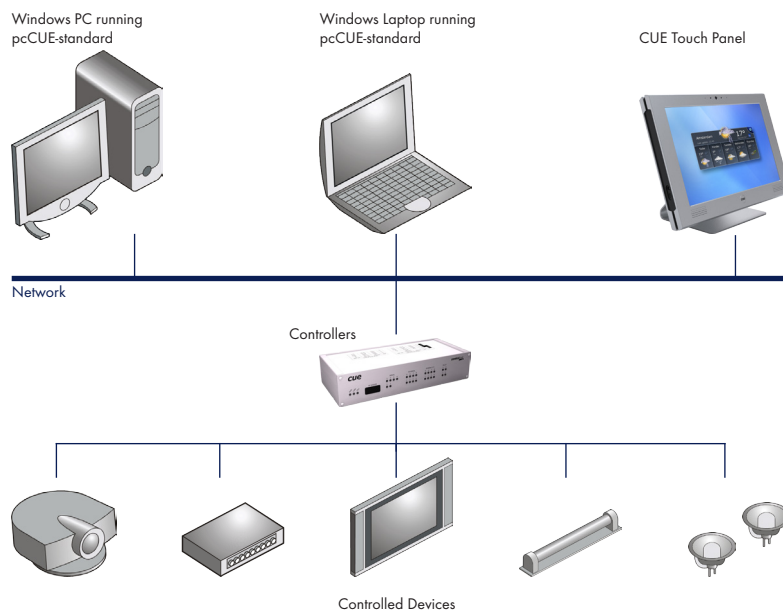
## Order Information

Product code **CS0405**

Purchase and registration

1. Download pcCUE-standard from [www.cuesystem.com](http://www.cuesystem.com) and install it on control panel target device. Login for download is required.
2. Send order for CS0405 to [sales@cuesystem.com](mailto:sales@cuesystem.com).
3. Start registration procedure after receiving the order confirmation and Serial Number File. For more details about registration procedure see pcCUE manual.

## Application Diagram



## Specifications

### Operating system

- Microsoft® Windows XP / Vista / 7 (32/64-bit)
- Microsoft® Windows 8 / 8.1 (32/64-bit) Desktop
- Microsoft operating systems running on virtual machines are not supported.

### Resolution

- Defined by application
- Full screen mode available

### Application upload

- Directly from Cue Visual Composer
- Using configuration window

### Communication

- Wired Ethernet or Wi-Fi
- CUEnet<sup>2</sup> protocol

### Configuration window

- Applications management
- Filestorage management
- E-mail configuration
- Registration

### Protection

- Based on target machine hardware identification

## System Requirements

### Minimum configuration

- 1 GHz or faster 32-bit (x86) or 64-bit (x64) processor
- Min. 1 GB RAM (32-bit) or 2 GB RAM (64-bit)
- Min. 20 MB available hard disk space depends on application
- DirectX 9 or higher graphics device

### Recommended configuration

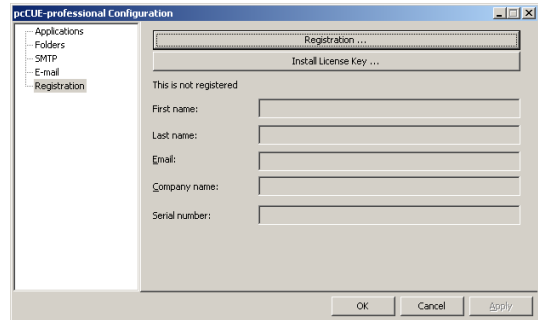
- Operating system Windows 7
- Two-core processor 2 GHz or faster
- 4 GB RAM
- 2 GB available hard disk space
- Graphics device with hardware video decoder

## pcCUE Comparison

		Full set of CVC graphic features	Ethernet and Wi-Fi communication	System communication with CUEunits	IP commands for device control
<b>pcCUE-standard</b>	<b>CS0405</b>	•	•	•	
pcCUE-professional	CS0406	•	•	•	•

## Configuration

The pcCUE offers configuration window providing the following features.



- Section Applications is used for uploading of application exported from Cue Visual Composer (file \*.cvca). All uploaded applications are listed. This section also permits other service functions like deleting files, starting/stopping specific application.
- Section Folders allows to set folder where data files are stored. It is analogy to filestorage in controllers and touch panels.
- Section SMTP is used for setting parameters of SMTP server. Set a name or an address and the port of your SMTP server and authentication. The SMTP server and port are used by the XPL<sup>2</sup> e-mail commands.
- Section E-mail is used for setting parameters of e-mail parameters and recipients addresses. The recipient Names and E-mails are addresses of recipients, where e-mails will be sent using the XPL<sup>2</sup> commands.
- Section Registration is used for software registration.